



Pulse 2 Hub | Set up Instructions for iOS

The Pulse 2 connects to home networks to unlock the luxury of automated shade control. Experience customization with scene and timer options as well as voice control via Google Assistant, Amazon Alexa and Apple HomeKit.

THE APP ALLOWS FOR:

1. Individual and group control – Group Automate shades by room and conveniently control them accordingly.
2. Remote connectivity - Control shades remotely, whether home or away on a local network or an internet connection.
3. Scene control - Personalize shade control and organize how your shades operate by specific daily events.
4. Timer functionality - Set and forget. Lower, raise and activate shade scenes automatically at the optimal time.
5. Sunrise and Sunset - Utilizing time zone and location, the Pulse 2 can automatically raise or lower Automate shades according to the position of the sun.
6. Compatible IoT Integrations
 - IFTTT via applets
 - Amazon Alexa devices
 - Google Home
 - Apple HomeKit

GETTING STARTED:

In order to experience automated shade control through the Automate Pulse 2 app, you will need to have:

- Downloaded the free app via the Apple App Store (available under iPhone apps) or iPad apps for iPad devices.
- Purchased one or more Hub's depending on the size of the area you would like to cover.
- Familiarized yourself with the app navigation guide below.
- Created a Location then pair hub to that location. Our step by step guide will explain in more detail.

WI-FI HUB TECHNICAL SPECIFICATIONS:

- Radio Frequency range: ~60 feet (no obstructions)
- Radio Frequency: 433 MHz
- Wi-Fi 2.4 GHz or Ethernet Connectivity (CAT 5)
- Power: 5V DC
- For Indoor Use Only

SETUP BEST PRACTICES:

- The Hub must be within signal range of both the automated shades and the connected via Lan or Wi-Fi router.
- If you chose to use the Wi-Fi network option, verify that it's visible.
- Environments with multiple WAPs (wireless access points) may need all but the main router temporarily disabled.
- Security settings may need to be temporarily disabled.

CAPABILITIES:

- Motors per Hub: 30
- Locations per account: 5
- Hub's per location: 5
- Rooms per Location: 20
- Scenes per Location: 20
- Timers per Location: 20

WHAT'S IN THE BOX?



A.
Automate Pulse 2
Hub



B.
USB Power
Supply



C.
32" (80cm) USB
Power Cord



D.
Ethernet cable

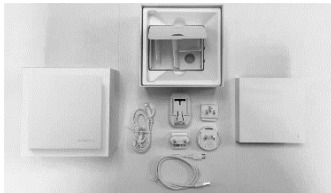


E.
Quick Start Guide

UNPACKING THE HUB 2.0:



1. Unpack the Pulse 2.



2. Check the Box Contents.



3. Plug the USB Cord
into the Power Supply



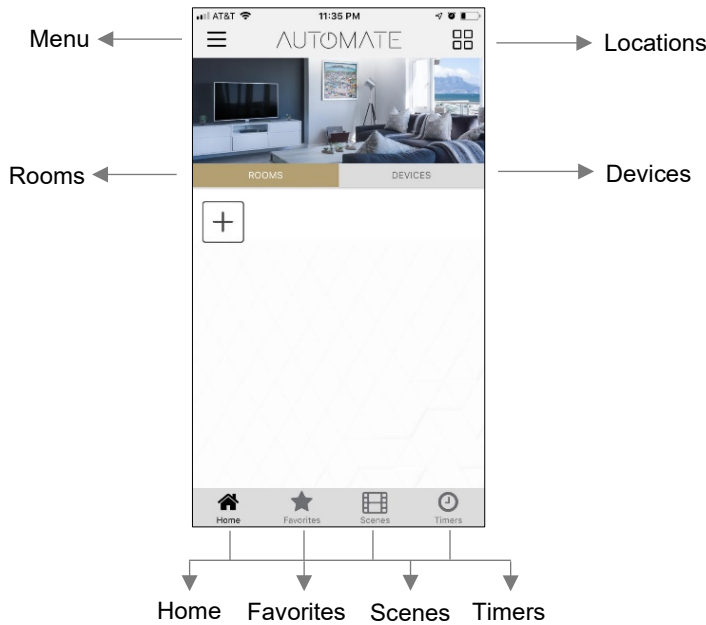
4. Connect the Micro
USB end into the back
of the Pulse 2



5. Plug the Power Supply
into the outlet and place
the Hub in a central
location in your home.

APP NAVIGATION

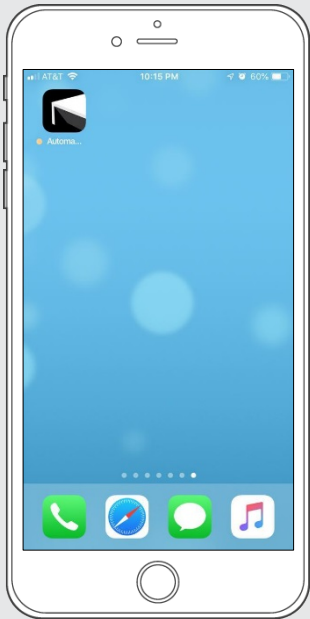
Home Page



- Home:** Shows the main control screen with rooms and devices tabs
- Favorites:** Allows you to create a list of your favorite Devices or Scenes
- Scenes:** Show a list of scenes created
- Timers:** Show a list of scene timers

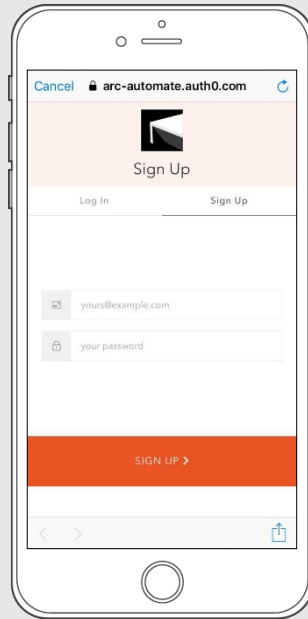
SETTING UP:

STEP 1 – Open App



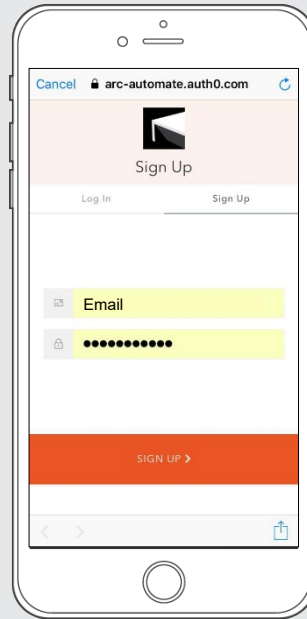
Open the Automate Pulse 2 mobile App.

STEP 2 – Sign Up



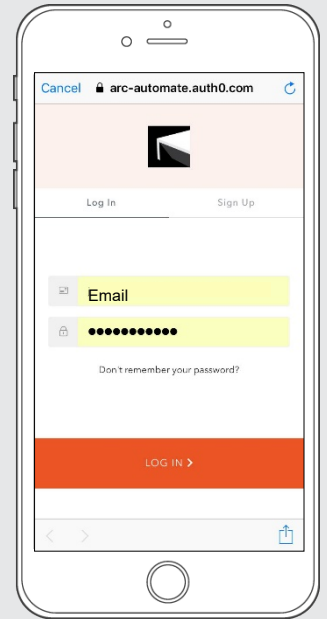
If required, create a new account. Select Sign Up on the Top Right corner of the screen.

STEP 3 – Sign Up



Creating an account will require an email address and password

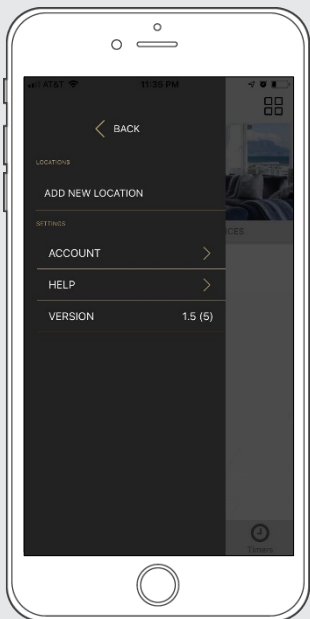
STEP 4 – Sign In



If you already have an account Log in with your account information.

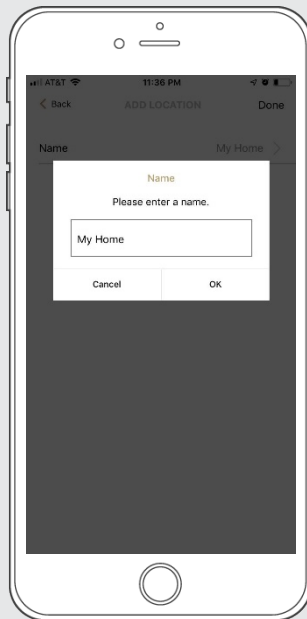
CREATING A LOCATION:

STEP 5 – Add Location



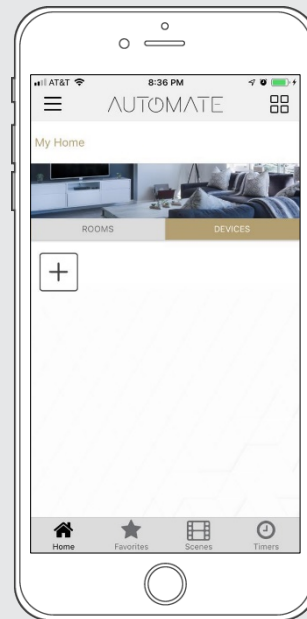
Open the App from the home screen and select the menu button, click "ADD NEW LOCATION".

STEP 6 – Add Location



Select the default location and update the location name if desired. Select Ok then Done.

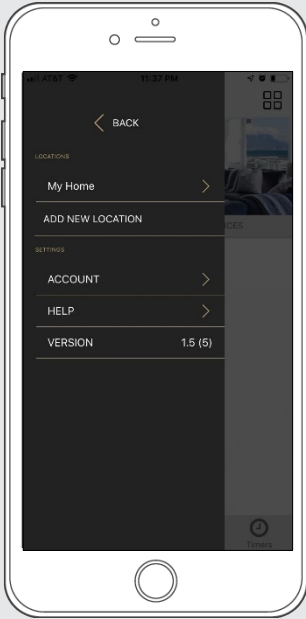
STEP 7 – Toggle Location



If you have setup multiple locations, select the 'Location' icon in the upper right corner to toggle between locations.

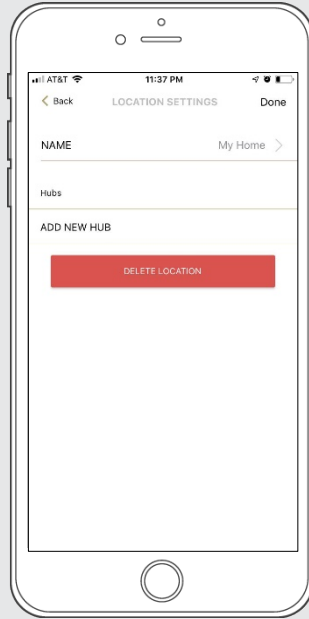
CONFIGURING A HUB:

STEP 8 - Configure a Hub



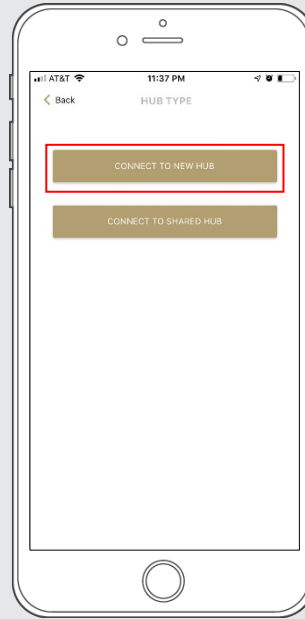
Select the location desired to add a new hub to.

STEP 9 - Configure a Hub



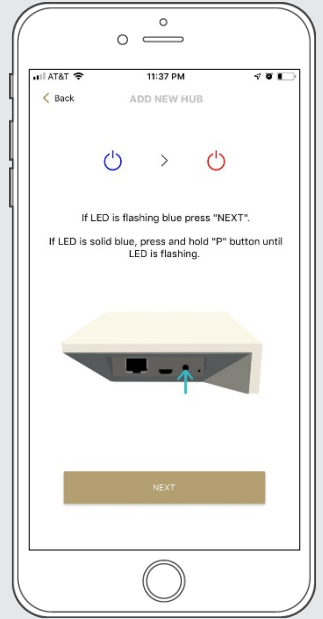
Click on "ADD NEW HUB" to start the process to setting up your HUB on the App.

STEP 10 - Configure a Hub



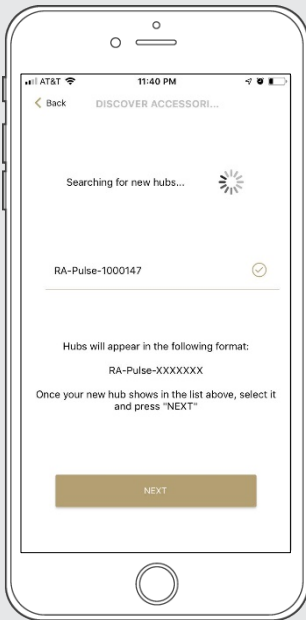
Follow on the screen instructions and click on the button to connect to NEW HUB.

STEP 11 - Configure a Hub



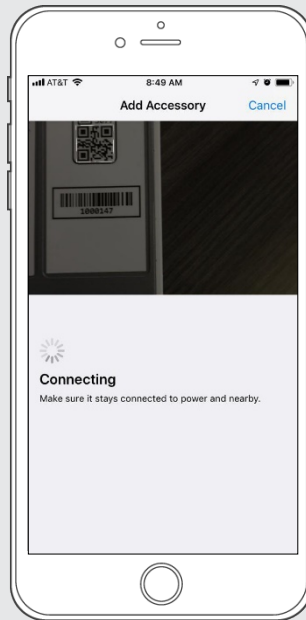
Pressing the P button for ~2secs until the Blue LED begins flashing. This indicates the hub is in pairing mode.

STEP 12 - Configure a Hub



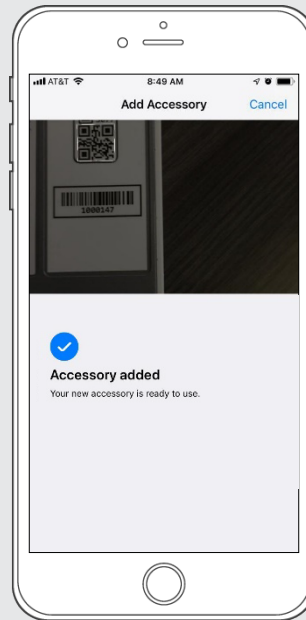
From the list select the hub you wish to pair to. Select "NEXT"

STEP 13 - Configure a Hub



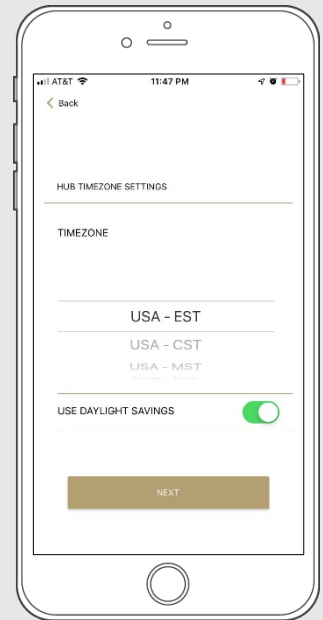
Scan the QR Code on the bottom of the hub to sync with Homekit

STEP 14 - Configure a Hub



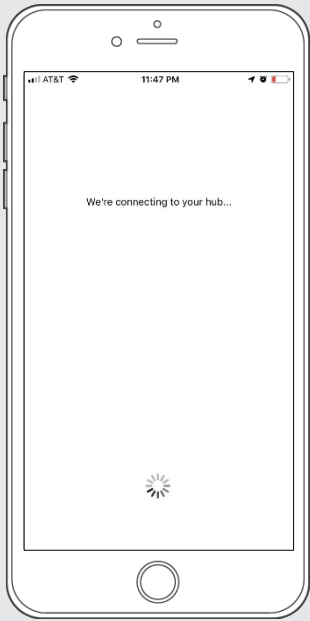
The hub was successfully added to Homekit!

STEP 15 - Configure a Hub



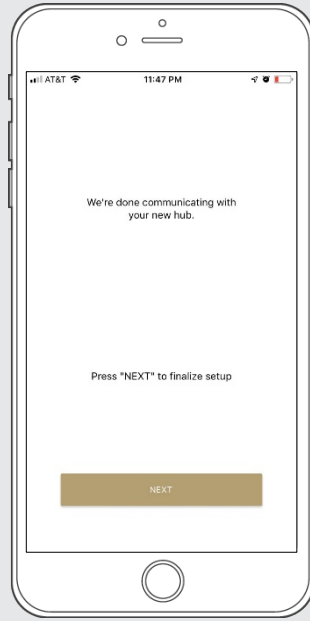
Select your Time Zone. This is important for timers to operate correctly.

STEP 16 - Configure a Hub



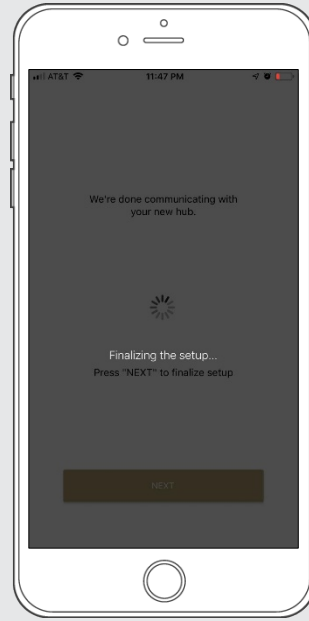
Wait while the hub connects to your Wi-Fi Network

STEP 17 - Configure a Hub



Select 'NEXT' to continue the setup process.

STEP 18 - Configure a Hub



Wait as the hub finalizes the setup.

STEP 19 - Configure a Hub

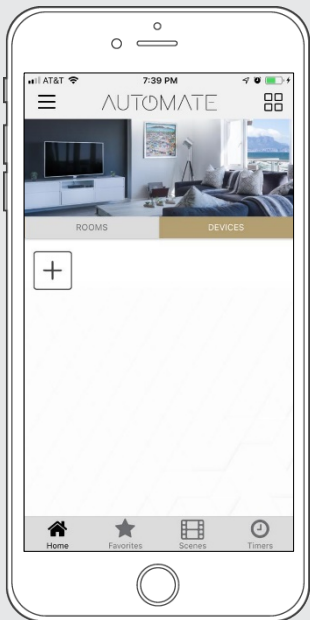


The Hub is ready to be used! Press 'DONE' to start the Application.

HOW TO PAIR A MOTOR TO THE APP:

We recommend setting up your motors with a remote prior to syncing with the App.

STEP 20 - Pair a motor



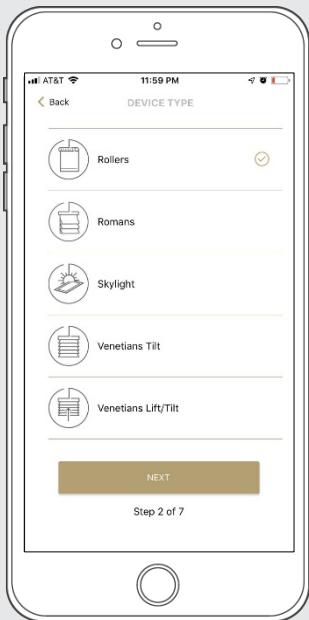
On the home screen select 'DEVICES' then select the 'Plus' icon to add a new shade.

STEP 21 - Pair a motor



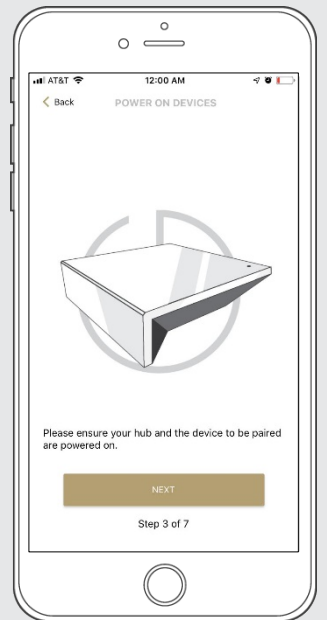
From the list select the HUB you wish to pair the motor too.

STEP 22 - Pair a motor



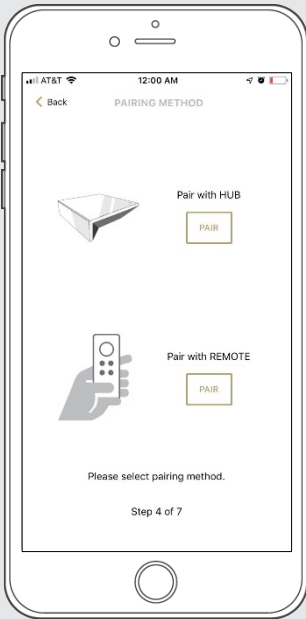
Select which device type best represents your shade.

STEP 23 - Pair a motor



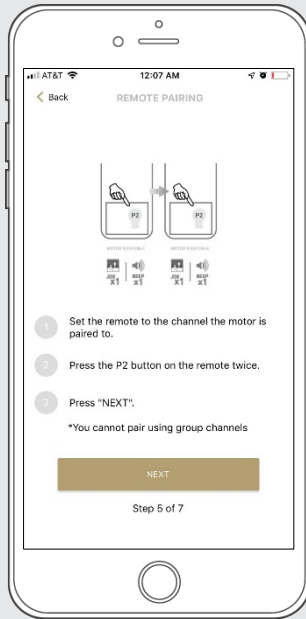
Make sure the shade device is plugged in or ready to be paired and select 'NEXT'

STEP 24 – Pair a motor



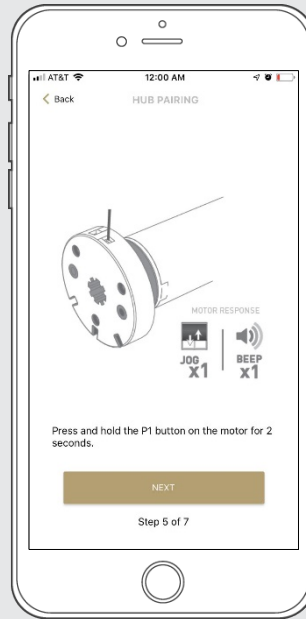
Choose your pairing method: 'PAIR USING HUB' or 'COPY FROM REMOTE'.
*We recommend copying from a remote for the best results.

STEP 25 – Pair with Remote



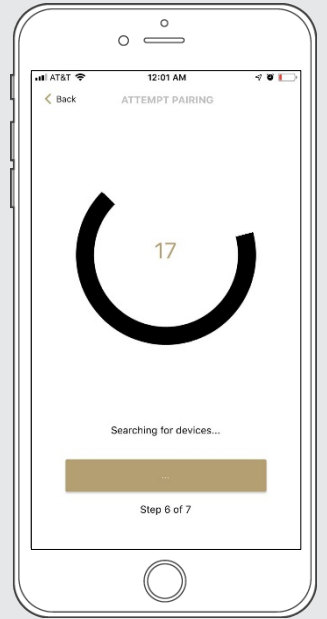
Make sure the remote is tuned to the shade's individual channel (not Ch 0). Remove the remote battery cover and press the upper left P2 button Twice, then "Next".

STEP 26 – Pair with HUB



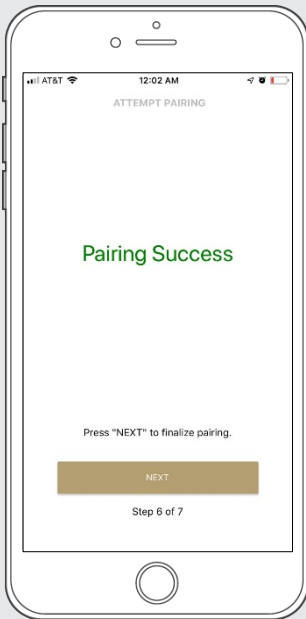
Press and hold the P1 button on the motor head ~2 seconds. The motor will jog up and down once and you will hear one audible beep. Press 'PAIR' on the app screen.

STEP 27 – Pair a motor



Wait as the app searches for the new device.

STEP 28 – Pair a motor



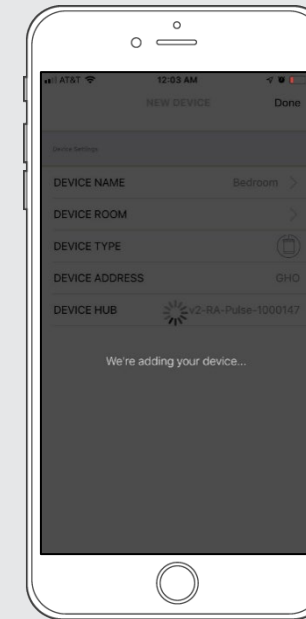
If the pairing process was successful, Press 'NEXT' to finalize pairing. If pairing fails, try the process again.

STEP 29 – Shade Details



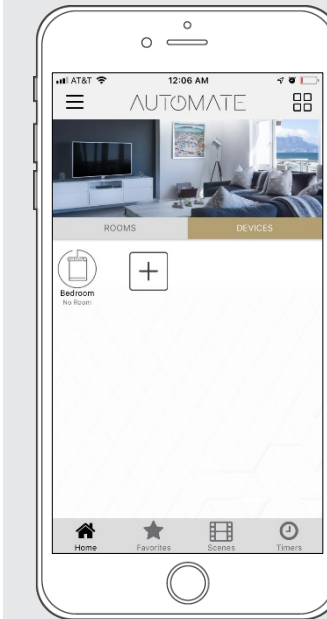
Input a Device Name to customize your treatment name. Press "Done" to complete setup.

STEP 30 – Pair a motor



The "New Device" will now be added to the 'DEVICE' tab

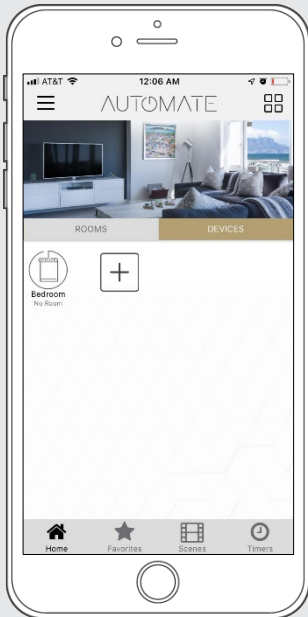
STEP 31 – Shade Ready



Shade is now ready for operation from Automate Pulse 2 App.

HOW TO OPERATE SHADES:

STEP 1 – Operate Shade



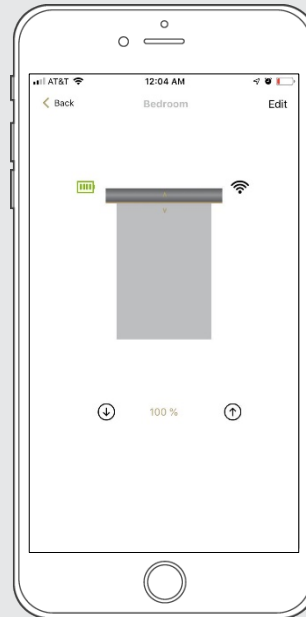
Select the device that you wish to operate.

STEP 2 - Open a shade



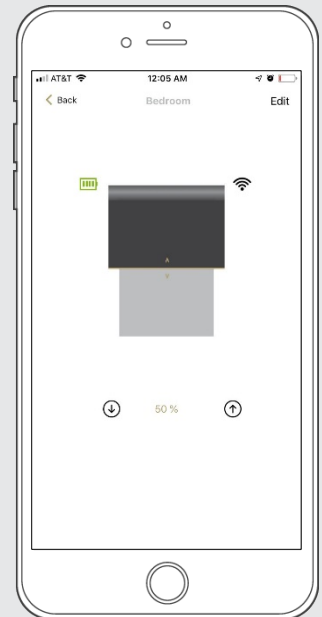
Close the shade by pressing the "Down Arrow" icon or scrolling the black line to the bottom.

STEP 3 - Close a shade



Open the shade by pressing the "Up arrow" icon or scrolling the black line to the top.

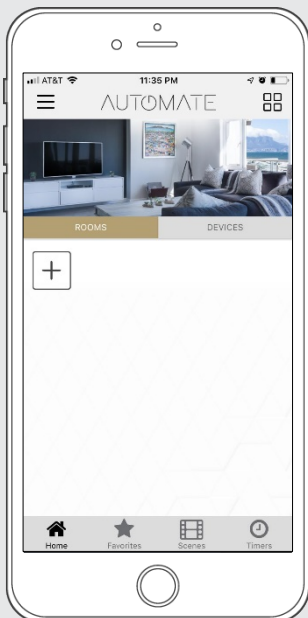
STEP 4 - Move a shade



Move the shade to the position desired by scrolling the black line to any position.

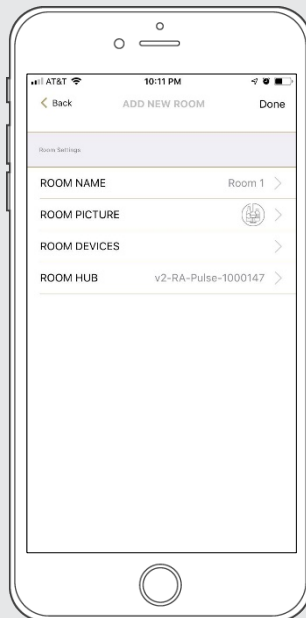
HOW TO CREATE A ROOM:

STEP 1 – Create a Room



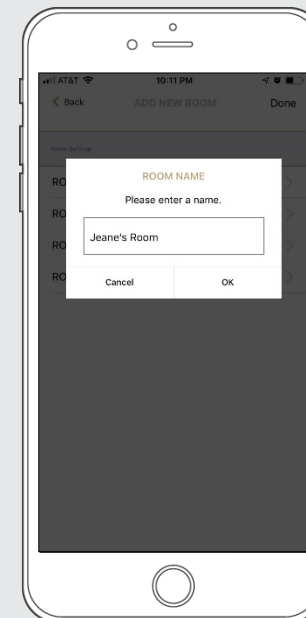
Once the Shades are paired to the App. Click 'ROOMS' tab. Select the "Plus" icon to add a new room.

STEP 2 – Create a Room



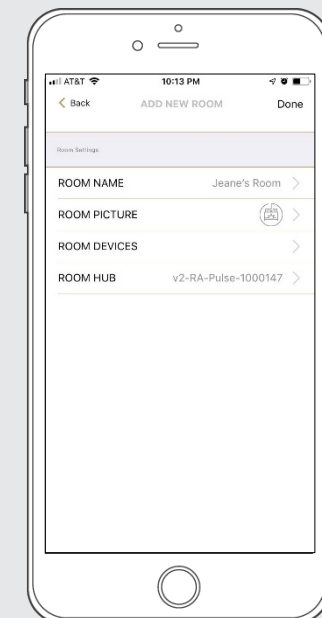
Select the 'ROOM NAME' to enter the desired room name.

STEP 3 – Create a Room



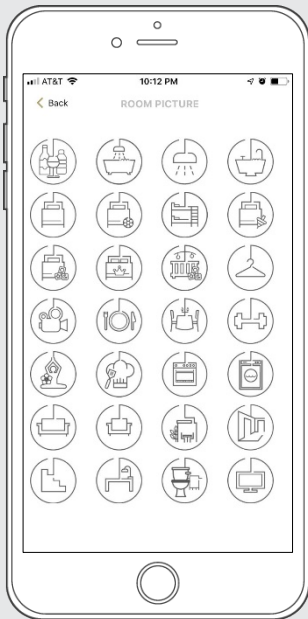
Enter the Room Name and click "OK".

STEP 4 – Create a Room



Select 'ROOM PICTURE' to select an icon to represent the room.

STEP 5 – Create a Room



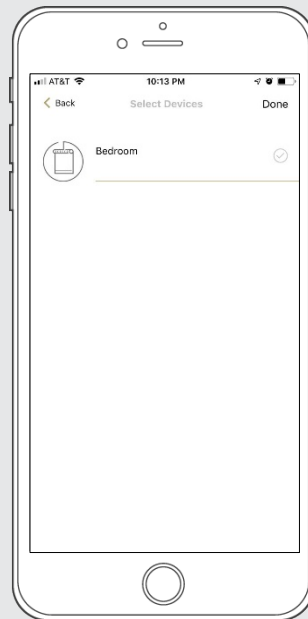
Select the appropriate icon for the Room.

STEP 6 -Add Shades to a Room



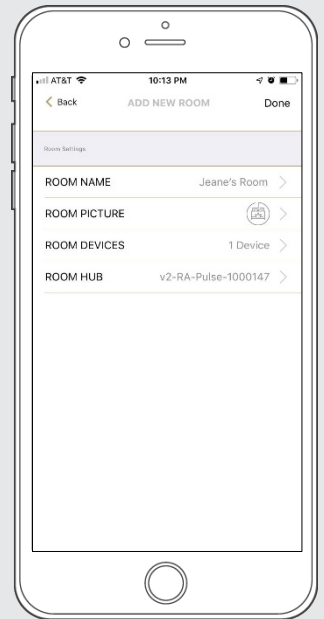
Select 'ROOM DEVICES' to add a new device to the room.

STEP 7 -Add Shades to a Room



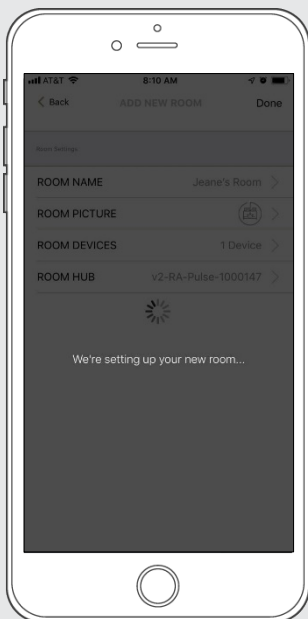
Select the devices you wish to be added to the room.

STEP 8 -Add Shades to a Room



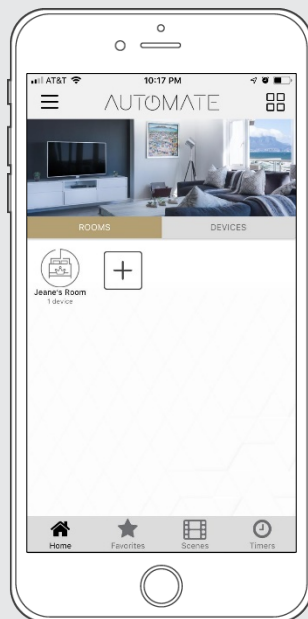
Press 'DONE' to complete the setup of the room.

STEP 9 -Add Shades to a Room



Wait for the App to conclude the process of room set up.

STEP 10 – Operate a Room



Select the Room to operate All shades that have been added to the room at the same time.

STEP 11 – Operate a Room

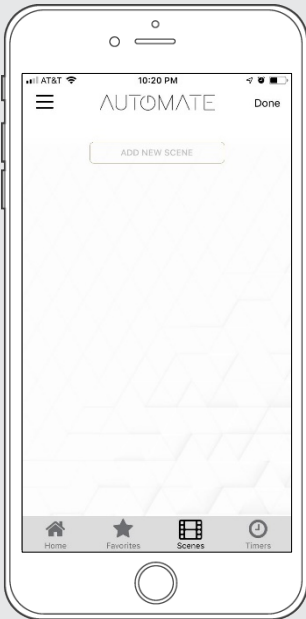


Operate all shades in the Room with the three button options available: Open, Close and move 50%

HOW TO CREATE A SCENE:

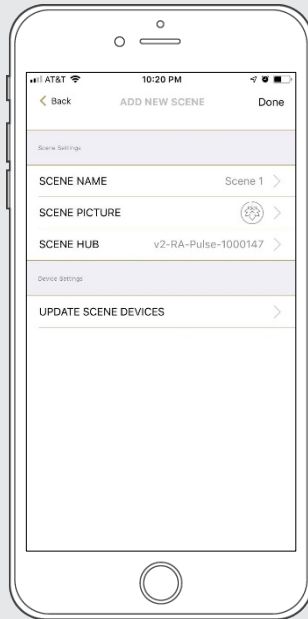
You can create scenes to set a treatment or group of treatments to specific heights.

STEP 1 – Create a Scene



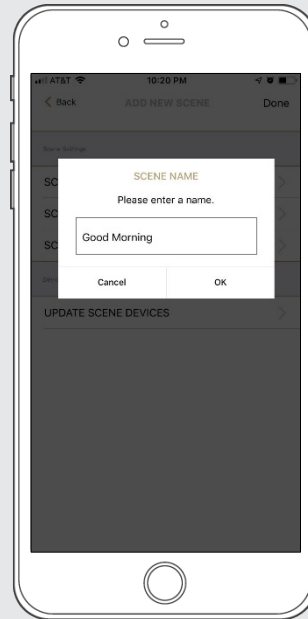
Select Scenes then, 'Add New Scene' to begin programming your desired scene.

STEP 2 – Create a Scene



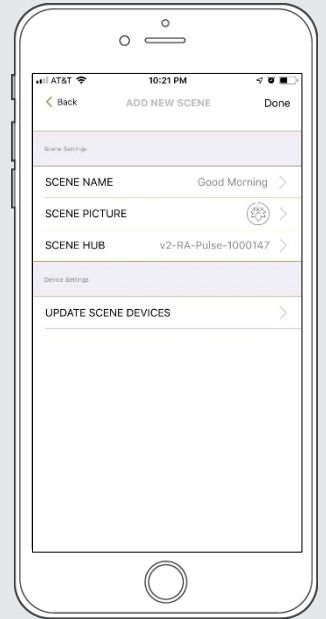
Select the 'SCENE NAME' to customize the name of your scene.

STEP 3 – Create a Scene



Input your scene name.

STEP 4 – Create a Scene



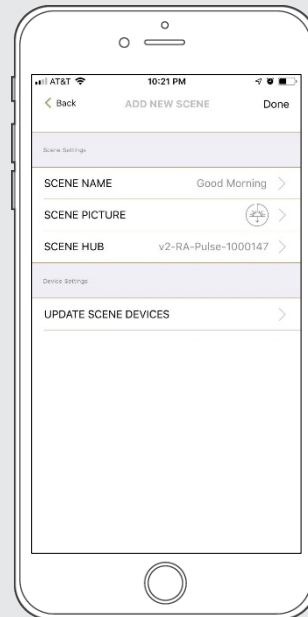
Select 'SCENE PICTURE' to customize the icon for your scene.

STEP 5 – Create a Scene



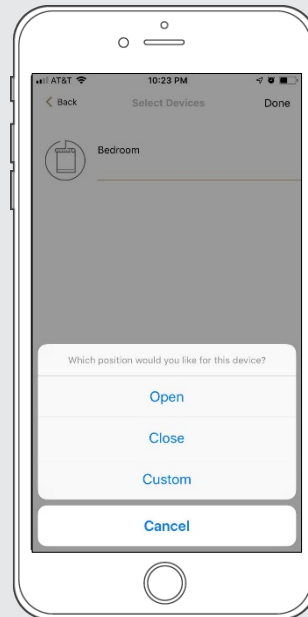
Select the icon that represents your scene.

STEP 6 – Create a Scene



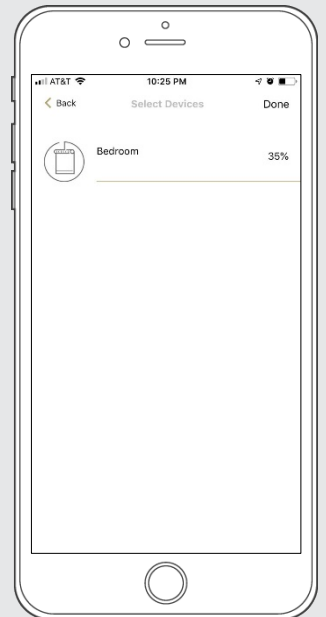
Select 'UPDATE SCENE DEVICES' to add devices into the Scene.

STEP 7 – Create a Scene



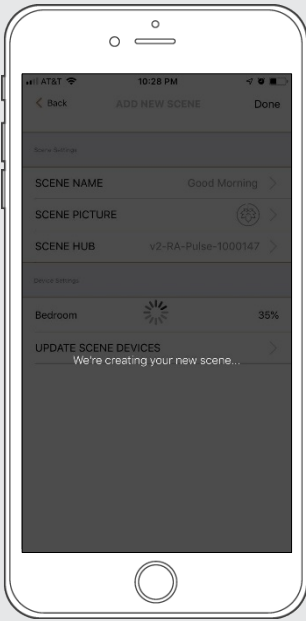
Choose custom heights (by %) or set open/close for all selected treatments.

STEP 8 – Create a Scene



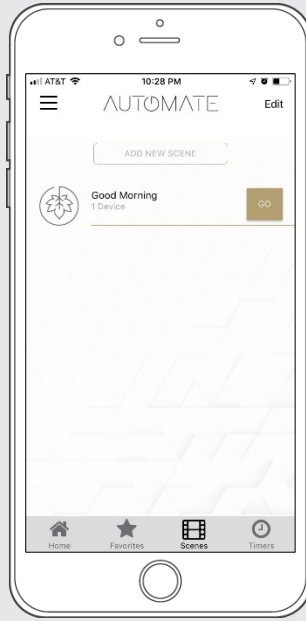
Set the shade height percentage if necessary. Select 'DONE' to create your scene.

STEP 9 – Create a Scene



Wait as the app creates your new scene.

STEP 10 – Activate a Scene



To activate your custom scene just press 'GO' next to the desired scene name

PROGRAMMING TIMERS:

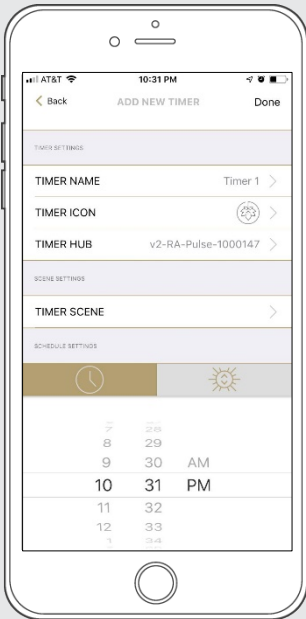
You can program timers to trigger the specific operation of your shades and scenes at your desired times throughout the day.

STEP 1 – Create a Timer



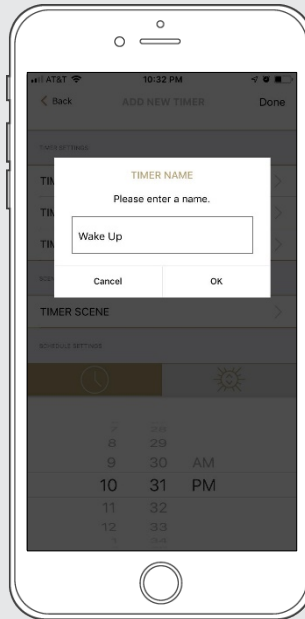
Select 'TIMERS' then, 'ADD NEW TIMER' to program your timer.

STEP 2 – Create a Timer



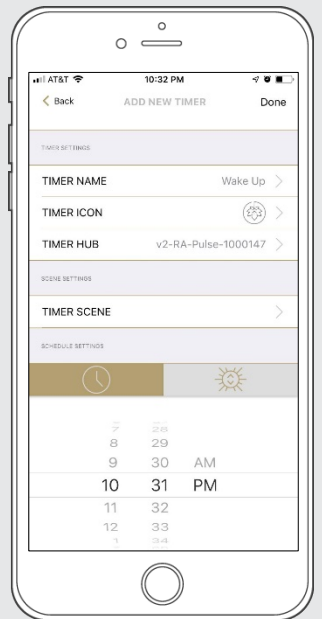
Select 'TIMER NAME'.

STEP 3 – Create a Timer



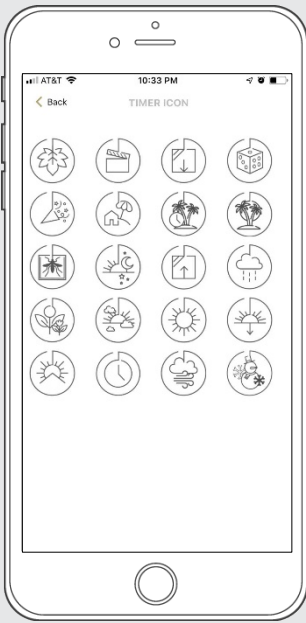
Input your desired timer name.

STEP 4 – Create a Timer



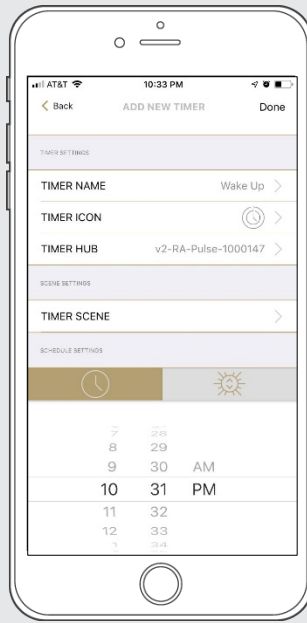
Select 'TIMER ICON' to add an icon for your timer.

STEP 5 – Create a Timer



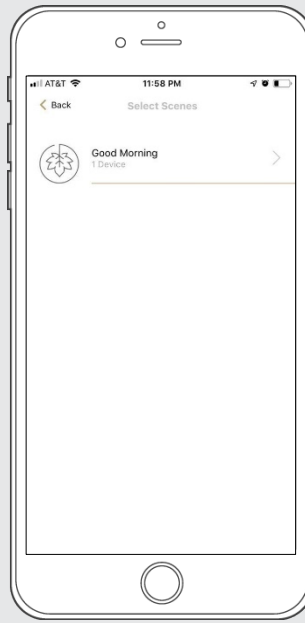
Select the appropriate icon for the Timer.

STEP 6 – Create a Timer



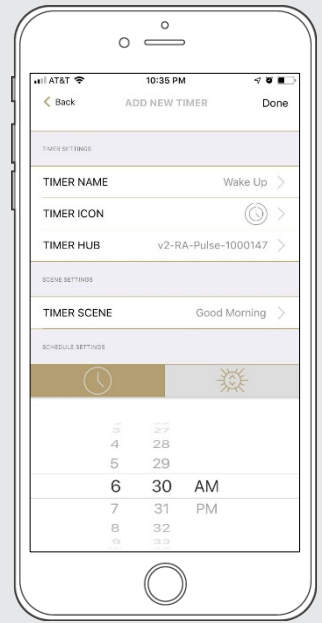
Select the 'TIMER SCENE' to choose the scene you wish the timer to activate.

STEP 7 – Create a Timer



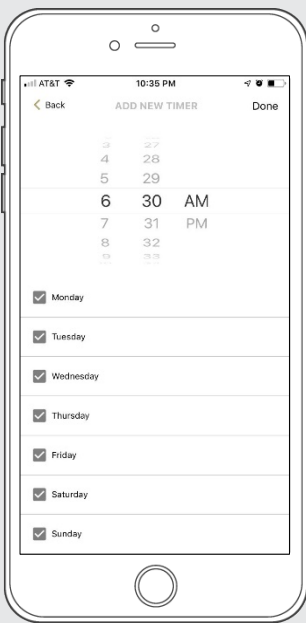
In the Scene list, add the scenes you wish to operate.

STEP 8 – Create a Timer



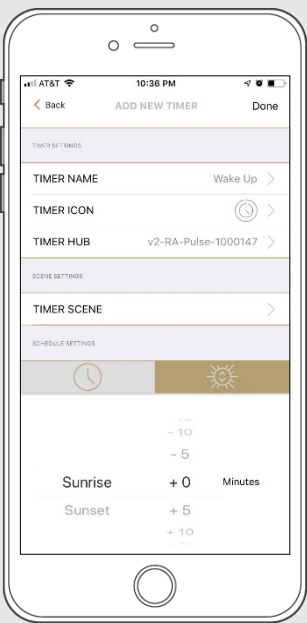
Set the time you wish the timer to trigger shade control.

STEP 9 – Create a Timer



Select the days you wish the timer to operate.

STEP 10 – Create a Timer



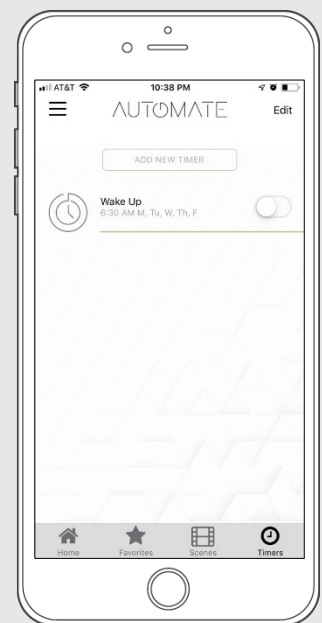
If you prefer, track your timer through the Sunrise/Sunset functions. Select 'DONE' to finalize your timer.

STEP 11 – Enable a Timer




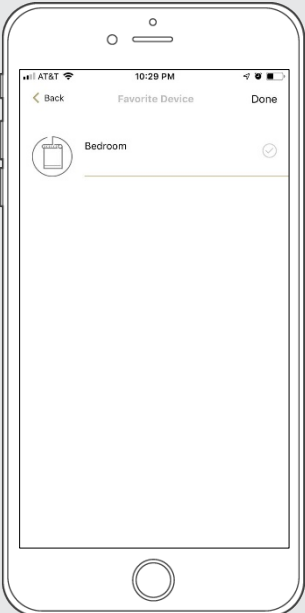

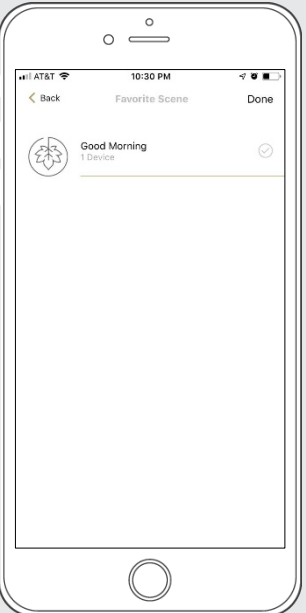
Your timer will now be enabled.

STEP 12 – Disable a Timer

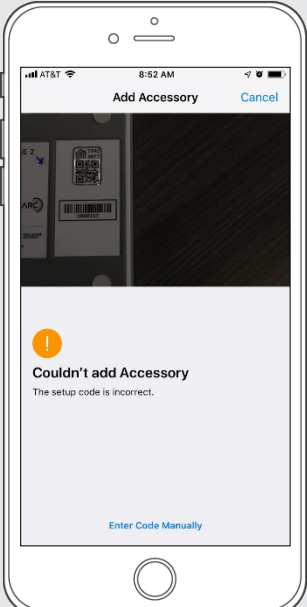
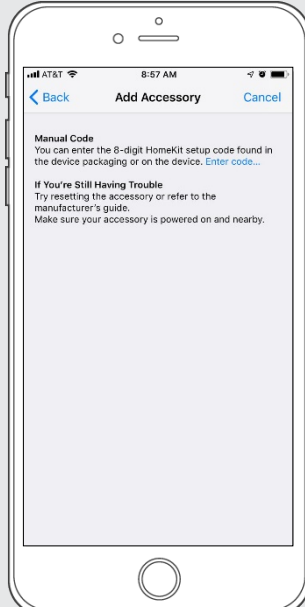
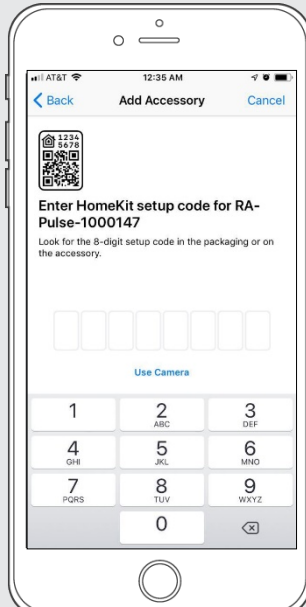



You can disable your timers to accommodate your schedule.

HOW TO CREATE FAVORITE:

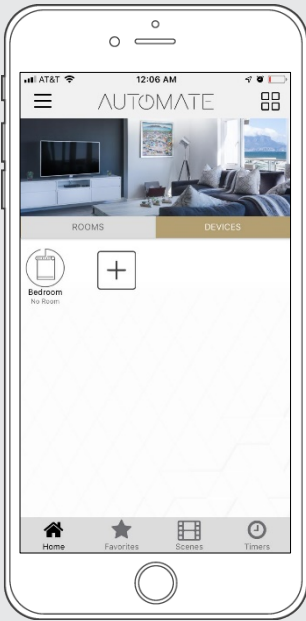
STEP 1 – Create a Favorite Device	STEP 2 – Edit a Favorite Device	STEP 3 – Create a Favorite Scene	STEP 4 – Create a Favorite Scene
			
<p>Select the "Plus" icon to add a favorite device to your 'Favorites' .</p>	<p>Select 'EDIT' in the upper right corner to remove the favorite device from your screen.</p>	<p>Select the "Plus" icon to add a favorite scene to your 'Favorites'</p>	<p>Select 'EDIT' in the upper right corner to remove the favorite scenes from your screen.</p>

MANUAL HUB CONFIGURATION:

STEP 1 - Configure a Hub	STEP 2 - Configure a Hub	STEP 3 - Configure a Hub	STEP 4 - Configure a Hub
			
<p>If the App doesn't recognize the QR Code, you should enter code manually.</p>	<p>Select 'Enter Code' to enter the Homekit code manually</p>	<p>Type the code on the label.</p>	<p>Wait while the hub syncs with Homekit.</p>

HOW TO ADJUST LIMITS:

STEP 1 – Adjust Limits



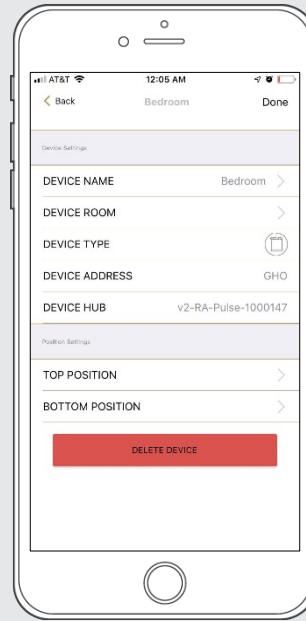
Select the device you want to adjust the limits on.

STEP 2 – Adjust Limits



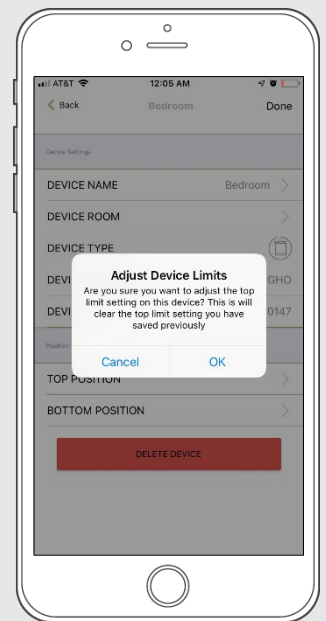
Select "Edit" on the top right to open the shades settings page.

STEP 3 – Setting Limits



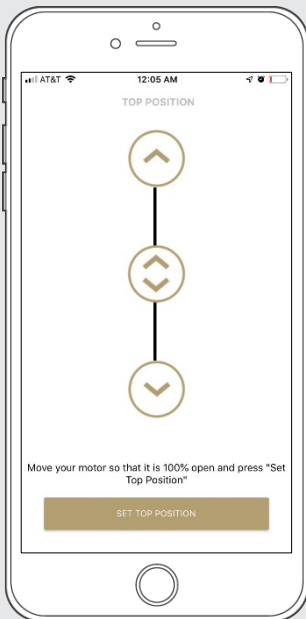
Modify the Top or Bottom position of the Device as desired.

STEP 4 – Setting Limits



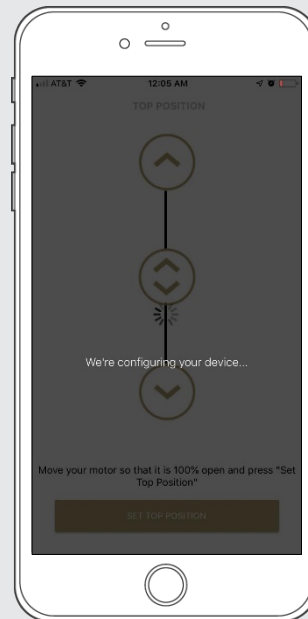
Select the 'Top Position' to change the upper limit of your shade. Press 'OK' to continue.

STEP 5 – Setting Limits



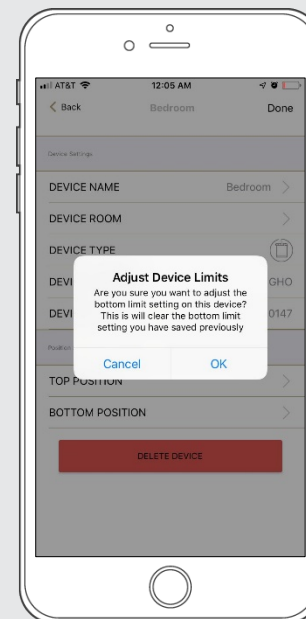
To move your shade a little bit, press the arrow buttons or slide the double arrow button. Press 'SET TOP POSITION' to save.

STEP 6 – Setting Limits



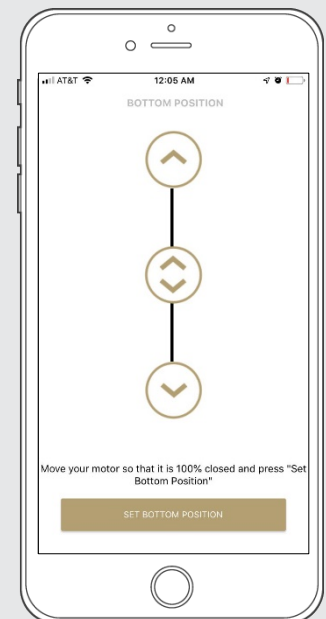
The app will configure the new top position.

STEP 7 – Setting Limits



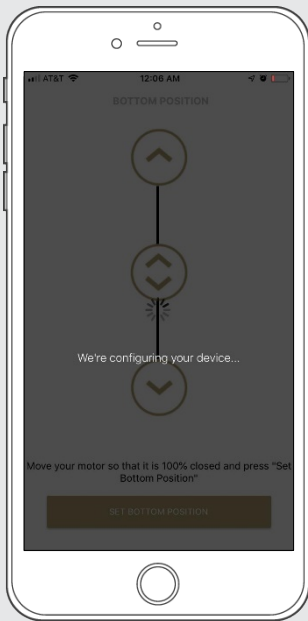
Press the 'Bottom Position' to change the lower limit of your shade. Press 'OK' to continue.

STEP 8 – Setting Limits



To move your shade a little bit, press the arrow buttons or slide the double arrow button. Press 'SET BOTTOM POSITION' to save.

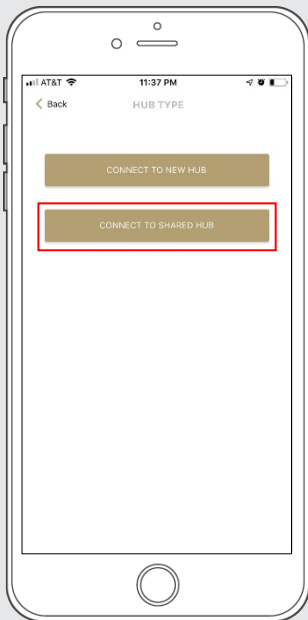
STEP 9 – Setting Limits



The app will configure the new Bottom Position.

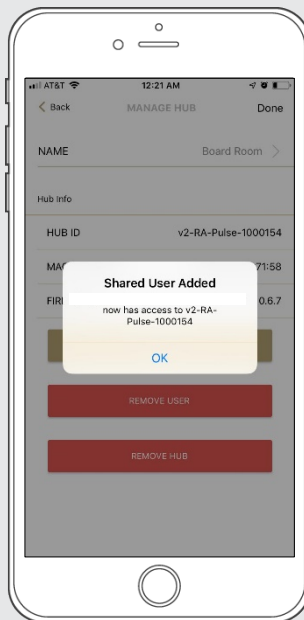
HOW TO SHARE THE HUB:

STEP 1 - Share a Hub



In the 'Add a Hub' Screen, it is possible to connect to a shared hub.

STEP 2 - Share a Hub



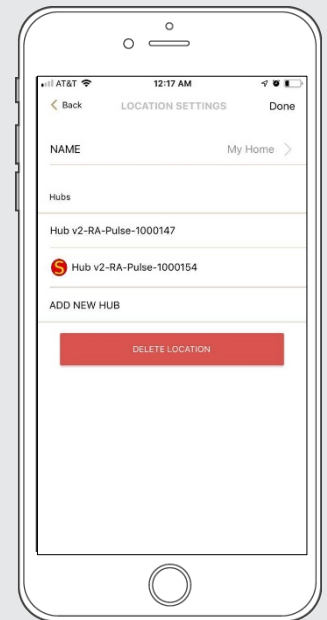
The HUB must have been shared from another account.

STEP 3 - Share a Hub



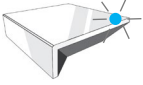
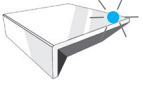
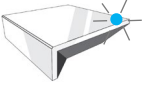
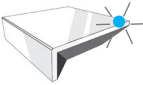

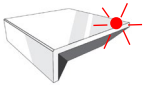
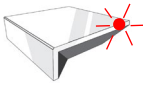
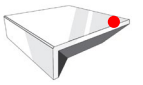
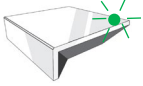


The shared Hub will be listed on the shared Hubs list to be added.

STEP 4 - Share a Hub

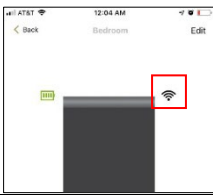


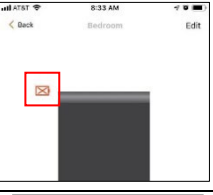
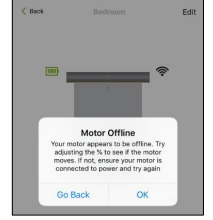


After it is added, the shared hub will appear under the Location Settings it was added to with a red 'S'.

LED STATUS INDICATION:

COLOR	RESPONSE	STATUS
	Blue LED blinks one time a second: <i>(On for 250ms and off for 850ms).</i>	AP Mode (Pairing Mode)
	Blue LED short blinks five times a second: <i>(On for 100ms and off for 100ms).</i>	Firmware Updating
	Blue LED long blinks two times a second: <i>(On for 250ms and off for 250ms).</i>	Connected to Wi-Fi (Paired without Internet)
	Blue LED short blinks two times a second: <i>(On for 100ms and off for 500ms).</i>	Pulse received configuration via the app (Before reset after Pairing Mode)
	Blue LED is Solid	Connected to Internet (Paired)
	Red LED long blinks four times a second: <i>(On for 250ms and off for 250ms).</i>	Reset Button Pressed (Paperclip Needed)
	-Red LED short blinks four times a second: <i>(On for 100ms and off for 150ms).</i>	Network Disconnected (Paired without Wi-Fi)
	Red LED is solid	Factory Reset Initiated (User can release reset button)
	-Green LED blinks 5 times for one second: <i>(On for 100ms and off 100ms).</i>	HomeKit Identification
	Re-provisioning Initiated <i>(User can release P button).</i>	Green LED is solid
	LED is Off	Hub is Offline

MEANING OF ICONS:

ICON	MEANING	STATUS
	Signal Icon	The Shade is connected to the HUB and works properly.
	Battery Icon Green	The Battery Level is over 70%.
	Battery Icon Yellow	The Battery Level is between 50% and 70%.
	Battery Icon Red	The Battery Level is less than 50%.
	Motor Offline	The motor is offline, and the control device is not on the same network.

TROUBLESHOOTING:

The following scenarios are common issues that may cause connectivity problems during the AUTOMATE PULSE 2 HUB pairing process. If you cannot achieve success connecting the Automate Pulse 2 Hub to your network, please reference below for the most common pairing roadblocks.

I CANNOT CONNECT TO MY HIDDEN WI-FI NETWORK.

The AUTOMATE PULSE 2 HUB does not currently support pairing with hidden networks. To connect to a hidden network, you will need to unhide the network. Once the network pairing process is complete you can re-hide the network and the Wi-Fi HUB will work without issue.

I HAVE MULTIPLE ACCESS POINTS (or a MESH network) AND CANNOT COMPLETE THE PAIRING PROCESS.

If you have multiple wireless access points, we recommend that you turn off all but the main router to complete the network pairing process. Once this is complete you can turn on all the wireless access points and the Wi-Fi HUB will work without issue.

I CANNOT CONNECT TO MY 5GHZ WI-FI NETWORK.

The AUTOMATE PULSE 2 HUB does not currently support operation over a 5GHz network. It operates on a 2.4GHz network or using a LAN CONNECTION (CAT 5). Most routers are dual band and can support both network configurations. Please make sure that the 2.4GHz band is turned on in your wireless router's settings.

NETWORK SECURITY SETTINGS ARE INTERFERING WITH THE SETUP PROCESS.

Some companies or large corporate offices have network security settings more advanced than the typical homeowner. If you are setting up in this environment, please consult your network administrator. It may be necessary to enable device-to-device communication. One solution is to use a device with a mobile data connection available in the background to complete the set-up process.

MY AUTOMATE PULSE 2 HUB IS NOT CONSISTENTLY WORKING.

There are many things that can interfere with the radio communication that the AUTOMATE PULSE 2 HUB uses. Try positioning the AUTOMATE PULSE 2 HUB in a different location and/or closer to the shade to improve performance. Due to varying levels of interference it may be necessary to purchase an additional Wi-Fi HUB to extend the coverage throughout your location.

SUPPORT RESOURCES:

For further assistance, contact your retailer, or visit our website at www.rolleseeacmeda.com.