



BLISS™ Automation Google Home Quick-Start Guide

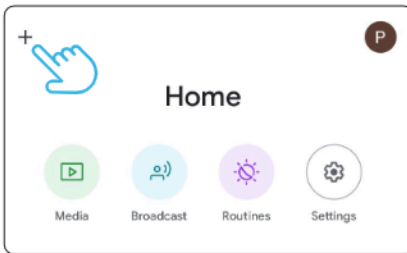


Getting Started

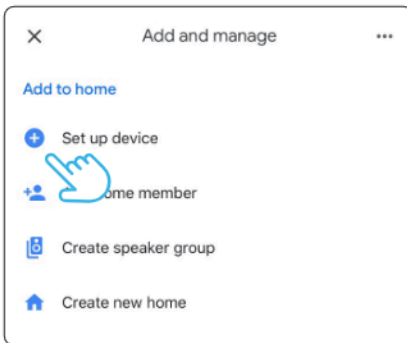
In order to take advantage of Google Assistant voice control of your BLISS Automation, you need:

- BLISS Automation Account with a BLISS Bridge registered to the account
- A Google Assistant-enabled device connected to your Google account
- The Google Home App downloaded and installed on your mobile device

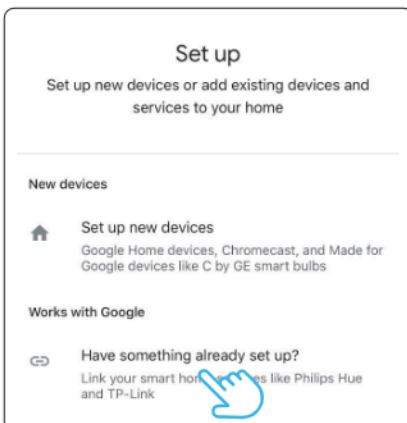
1. Open the Google Home App on your mobile device, and tap + icon



2. Choose the option: “Set Up Device”

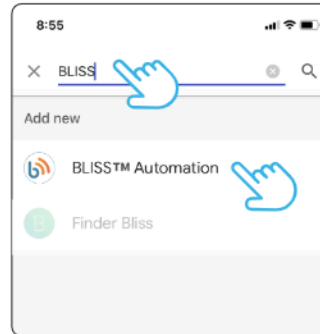


3. Choose the option: “Works with Google”

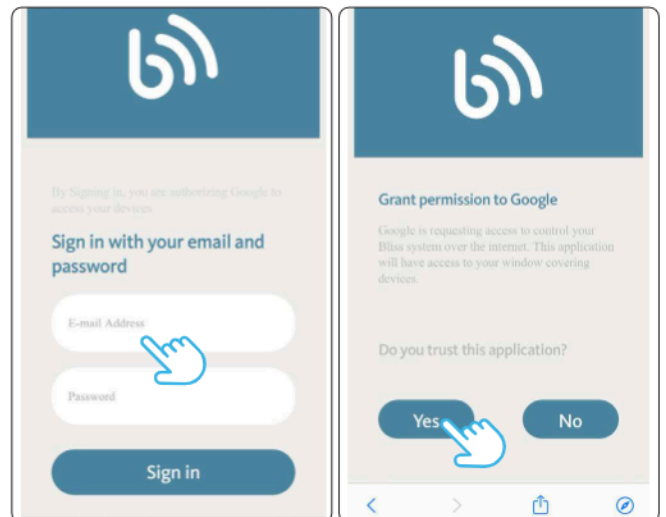


4. Add BLISS Automation to link with Google Home

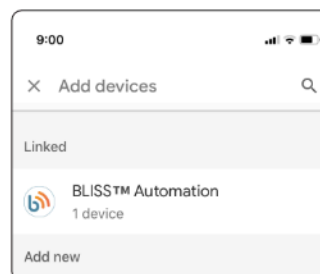
- Tap on the Magnifier Button located in the top right corner of the page; Search for **BLISS Automation** and tap on it



5. Enter your BLISS Automation login information to link with Google Home



6. Now, your BLISS Automation App is linked with Google Home



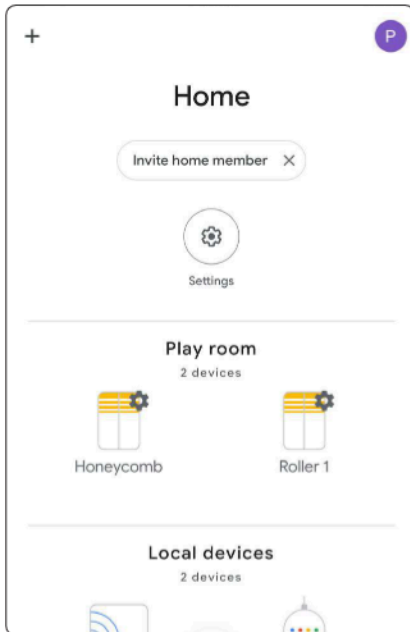


BLISS™ Automation

Google Home Quick-Start Guide



7. Automatically, Google Home App will discover all shades programmed in your BLISS Automation App. If necessary, change the name or rooms of blinds



8. Begin activating BLISS Automation using Google Assistant voice commands:

- To control an individual blind, start with “open” or “close” then just add the blind name. Do not add the word “blind”, “blinds”, “shade” or “shades” at the end.
“Hey Google, open/close (blind/shade name)”
- To control all blinds in the same Google Assistant room, start by choosing “open” or “close” then add the room name and the word “blinds” or “shades”, plural form, at the end.
“Hey Google, open/close (room name) blinds/shades”
- To move an individual blind to its favorite position, start with “set” then just add the blind name and the phrase “position to favorite”.
“Hey Google, set (blind/shade name) position to favorite”

8. Continued

- To move all the blinds in a specific room to their favorite position, start with “set” then just add the room name and word “blinds” or “shades” with the phrase “position to favorite”.
“Hey Google, set (room name) blinds/shades position to favorite”
- To move an individual blind to a specific % position, start with “set” then just add the blind name and the phrase “to % position”.
“Hey Google, set (blind/shade name) to 35% position”
- To move all blinds to a specific % position, start with “set” then just add the word “blinds” or “shades” with the phrase “to % position”.
“Hey Google, set (room name) blinds/shades to 35% position”
- To execute your BLISS Automation Scenes, start with “run” and add your BLISS Automation Scene names.
“Hey Google, run (Good Morning)”

Tips for Top-Down/Bottom-Up, Two-Fabric Combinations and TriLight shades:

- Google Home will only operate the bottomrail on Honeycomb or Cellular Top-Down/Bottom-Up and TriLight shades. Preset scenes will operate as usual.
- To control the Middle rail only:
“Hey Google, set (blind/shade name) up to 35% position”